

# School Profile

2022-2023



Anglo-Chinese School  
(Independent)

A Methodist Institution  
(Founded 1886)

121 Dover Road, Singapore 139650 | Tel: (65) 6773 1633 | Fax: (65) 6773 1433 | www.acsindep.moe.edu.sg | CEEB Code: 687213 | IB School Code: 002329

## Our History

Founded in 1886, Anglo-Chinese School (Independent) comes under the Singapore Ministry of Education and is an International Baccalaureate (IB) World School.

ACS(I) is distinctive for its quest for excellence and focuses on all-rounded, values-centric development, anchored in a school environment of family and community.

Admission is by merit. The school has an enrolment of 2,800 students from Years 1 to 6 (Grades 7 to 12). Only boys are admitted to Years 1 to 4 while Years 5 to 6 are co-ed.

## Academic Programmes

ACS (Independent) offers 2 academic tracks:

- 4-year Express programme leading to GCE O-Level.
- 6-year Integrated Programme (IP) leading to IB Diploma Programme (IBDP).

The IP caters to academically strong students (typically the top 10% of the nation's cohort) who would benefit from engaging in broader learning experiences during their Secondary and Junior College years.

Our academic calendar begins in January and ends in December of the same year, with two semesters in total.

## Our Core Purpose

"To nurture our students to be catalysts for change with Godly values and robust character, equipped and willing to serve and lead in the family, nation and the global community."

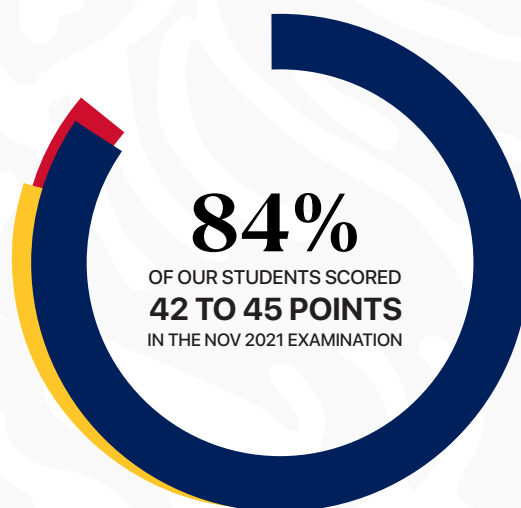
## Overall Excellence

Our students and alumni have represented the country at the Olympic Games since 1964.

The school has consistently produced excellent results in all areas. Its performance in the IBDP continues to set world standards. **In the Nov 2021 examination, 100% of the cohort was awarded diplomas.** The maximum score is 45 points.

The school's sports, performing arts and uniformed groups have continued to emerge in top positions in the national school rankings and competitions.

In international competitions and Olympiads, our students have also consistently emerged in top placings.



### School Leaders

Mr. Arene KOH, Principal  
Ms. CHOCK Siew Hwa, Deputy Principal  
Mdm. YONG Lee Har, Deputy Principal  
Mrs. Judy HO, Deputy Principal  
Mr. Patrick SOO, Deputy Principal  
Mr. Terence CHEW, Deputy Principal  
Dr. Andrew YONG, Deputy Principal

### College Counsellors

Mrs. Juliana LIU-TENGARA  
Director, Career Opportunities & Guidance  
julianatengara@acsindep.edu.sg

Ms. HWANG Ying Chien  
College Counsellor  
hwangyingchien@acsindep.edu.sg

Ms. Shahidah Binte KAMALLUDIN  
College Counsellor  
shahidah@acsindep.edu.sg

## Talent & Leadership Development

A number of our students pursue their studies under various scholarships and talent development programmes offered by the Ministry of Education. These include:

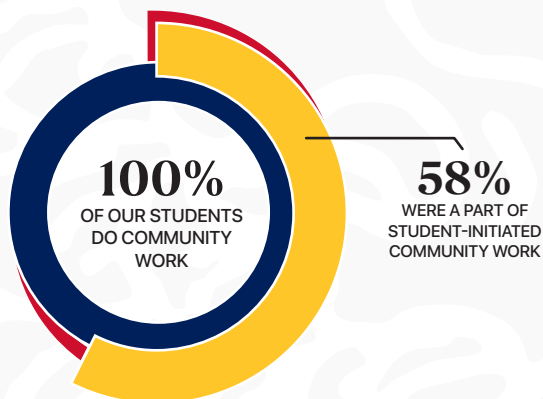
- Gifted Education Programme
- Music Elective Programme
- Humanities Scholarship Programme
- Regional Studies Programme

School-based programmes such as the Advanced Science Programme provide highly able and talented students enrichment beyond the syllabus.

## Serving & Leading the Community

Service to community is an integral aspect of school life.

Beyond the IB community service requirements, students actively give back to society, especially children and elderly through daycare centres and hospitals. In 2021, they were heavily involved in **student-initiated** community service activities, partnering with **103 organisations**.



Overseas community service projects were suspended due to travel restrictions, but in previous years, nearly 1 in 4 would have initiated service projects with an overseas partner organisation.

## Co-Curricular Activities

ACS(I) offers **60** different Sports and Games, Performing Arts, Clubs and Societies as well as Uniformed Groups (UGs) as Co-Curricular Activities (CCAs). **Year 1 to 4** students are expected to participate in **two CCAs**, with one being a UG. **Year 5 to 6** students are actively involved in **at least one CCA**, with some taking up multiple CCAs, depending on their interests and time management.

ACS(I) is thankful for the strong showing of our CCAs from 2020 to 2021, despite disruptions due to the COVID-19 pandemic. Our students have clinched **accolades and championship titles** under various categories, including (but not limited to):

- Academic Competitions
- Clubs & Societies
- Sports
- Performing Arts
- Uniformed Groups

## Scholarships & University Placements

Our IB students comprise 3% of the country's pre-university student cohort, the majority of whom take GCE A-Levels.

The school has **6 President's Scholars in its 17 cohorts**. This is the most prestigious undergraduate scholarship awarded by the Public Service Commission of Singapore. Many others have received prestigious national and international scholarships.

## IB Diploma Programme Class of 2022

The graduating class of 2022 has 445 students, the majority of whom are Singaporeans.

Students may be admitted at Year 1 IP (Grade 7), Year 3 IP (Grade 9) or Year 5 (Grade 11) and sit for the IBDP examination at Year 6 (Grade 12). The IBDP cohort comprises the IP students in their 5th and 6th years as well as top performing GCE O-Level students.

## ACS(I) IB Diploma Programme

ACS(I) IBDP students offer the full IB diploma comprising three Higher Level (HL) subjects, three Standard Level (SL) subjects as well as three core requirements of the IBDP: Extended Essay (EE), Theory of Knowledge (TOK), and Creativity, Activity, Service (CAS).

One subject must be chosen from each of the Groups 1 to 5, and the 6th subject can be chosen from any group, except Group 2. Our students are allowed to take a maximum of 3 HL and 3 SL subjects. The medium of instruction is **English**.

## Grading System

We do not rank our students or calculate GPA. Predicted IB Grades are not revealed to our students and are sent by the school along with their academic transcripts for university applications if required.

## COVID-19 Impact Summary

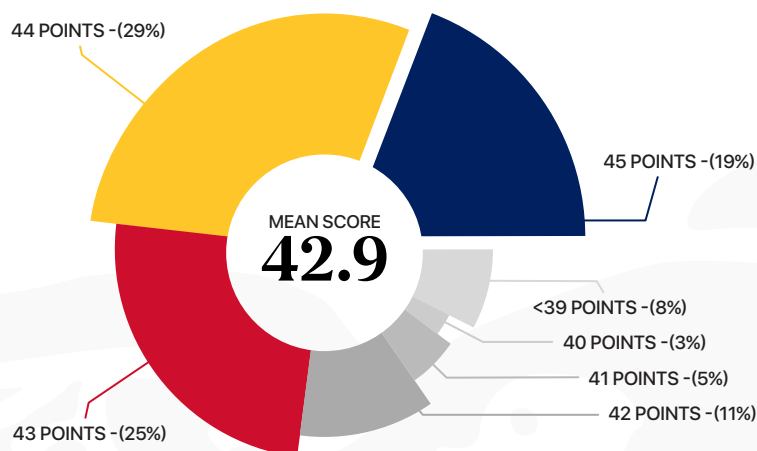
The COVID-19 situation has affected many worldwide. Despite these challenges, the grading and graduation requirements for the Class of 2022 and Class of 2021 remained unchanged. However, for the latter, virtual-based efforts for CCAs, school activities and service to the community were still ongoing.

For the Class of 2020, all pandemic-related arrangements were made cognisant of the potential loss of curriculum time and to minimise the impact on the then-graduating cohort. This includes Home-Based Learning, Safe Management Measures, changes to the 2020 academic calendar and school-based assessments, as well as virtual-based efforts for CCAs, school activities and service to the community.

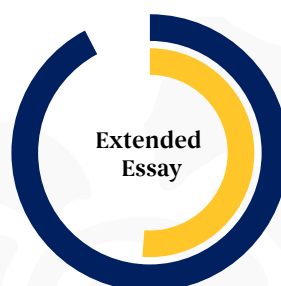


# ANGLO-CHINESE SCHOOL (INDEPENDENT) 2021 IB Diploma Programme Results

## 2021 Cohort Point Distribution



## Percentage of Candidates Awarded Grade A & B for EE & TOK



## Overall Subject Results

Subject Group	Subject	No of Candidates	Cumulative Percentage of Students Who Scored		School Average Grade	World Average Grade
			7	≥6		
Group 1	HL ENGLISH A: Lang and Literature	28	39.29	85.71	6.25	5.49
	SL ENGLISH A: Lang and Literature	386	29.02	91.19	6.2	5.74
	HL ENGLISH A: Literature	28	53.57	100	6.54	5.57
Group 2	SL FRENCH AB.	11	90.91	100	6.91	5.67
	SL MALAY B	13	100	100	7	6.34
	SL CHINESE B	341	97.07	100	6.97	6.77
	SL SPANISH AB.	9	84.21	100	6.84	5.78
	SL TAMIL B	32	78.12	100	6.78	6.26
Group 3	HL BUSINESS MNGT	21	95.24	100	6.95	5.31
	SL BUSINESS MNGT	59	81.36	98.31	6.80	4.84
	HL ECONOMICS	165	88.48	98.18	6.87	5.97
	SL ECONOMICS	172	90.12	100	6.9	5.91
	HL GEOGRAPHY	18	66.67	100	6.67	5.81
	SL GEOGRAPHY	31	67.74	96.77	6.65	5.57
	HL HISTORY	44	75	95.45	6.7	4.69
	SL HISTORY	25	68	100	6.68	4.76
Group 4	HL BIOLOGY	166	77.71	99.40	6.77	5.17
	SL BIOLOGY	19	78.95	89.47	6.68	4.24
	HL CHEMISTRY	348	92.82	99.14	6.92	5.91
	SL CHEMISTRY	41	73.17	92.68	6.63	4.68
	HL PHYSICS	156	87.18	96.79	6.84	5.59
	SL PHYSICS	45	93.33	95.56	6.89	4.46
	HL COMPUTER SC.	11	54.55	90.91	6.45	5.33
Group 5	HL MATHEMATICS	336	74.40	94.64	6.69	5.56
	SL MATHEMATICS	106	83.96	95.28	6.78	4.74
Group 6	HL MUSIC	2	50.00	50.00	6	5.88
	HL VISUAL ARTS	3	33.33	33.33	5.67	4.83

# University Placements

Our alumni have enrolled in the following universities:



Countries of which universities our alumni have enrolled in ●

## Asia

### China

Fudan University  
Peking University  
Xi'an Jiaotong Liverpool University

### Hong Kong

Chinese University of Hong Kong  
City University of Hong Kong  
Hong Kong University of Science & Technology  
University of Hong Kong

### India

National Institute of Technology, Tiruchirappalli

### Indonesia

Maranatha Christian University  
Universitas Pelita Harapan

### Japan

Kyushu University  
Ritsumeikan Asia Pacific University  
Tokyo University of Foreign Studies  
Waseda University

### Singapore

Nanyang Technological University  
National University of Singapore  
Singapore Institute of Technology  
Singapore Management University  
Singapore University of Social Sciences  
Singapore University of Technology & Design  
Yale-NUS College

### South Korea

Seoul National University  
Yonsei University

### Philippines

Ateneo de Manila University

## Oceania

### Australia

Australia Defence Force Academy  
Australian National University  
James Cook University  
La Trobe University  
Macquarie University  
Monash University  
Murdoch University  
Queensland University of Technology  
University of Adelaide  
University of Melbourne  
University of Newcastle  
University of New South Wales  
University of Queensland

University of Sydney  
University of Tasmania  
University of Western Australia

### New Zealand

Auckland University of Technology  
University of Auckland  
University of Otago  
Victoria University of Wellington

## Canada

McGill University  
University of British Columbia  
University of Toronto  
University of Victoria  
University of Waterloo

## Europe

### France

Sciences Po – College Universitaire du Havre

### Ireland

National University of Ireland  
Trinity College Dublin  
University College Cork

### Netherlands

Delft University of Technology

### Spain

IE University

### Switzerland

Ecole Hoteliere de Lausanne  
ETH Zurich  
Webster University, Geneva

### United Kingdom

Architectural Association School of Architecture  
Bristol University  
Cardiff University  
Central St Martins College of Arts and Design  
Durham University  
Glasgow University  
Imperial College London  
Keele University  
King's College London  
London School of Economics  
Queen Mary, University of London  
Royal College of Music  
Royal Veterinary College  
School of Oriental & African Studies, University of London  
St George's, University of London  
Trinity College London  
University College London  
University of Bath  
University of Birmingham  
University of Bristol  
University of Cambridge  
University of Dundee  
University of Edinburgh  
University of Leeds  
University of Liverpool  
University of London  
University of Manchester  
University of Newcastle  
University of Nottingham  
University of Oxford  
University of Sheffield  
University of Southampton  
University of St Andrews  
University of Warwick  
University of York

## United States

Amherst College  
Bates College  
Bentley University  
Boston College  
Boston University  
Brown University  
Bryn Mawr College  
California Institute of Technology  
California Polytechnic State University  
California State University  
Long Beach Carleton College  
Calvin College  
Carnegie-Mellon University  
Claremont McKenna College  
Colorado College  
Colgate University  
Columbia University  
Cornell University  
Dartmouth College  
Duke University  
Embry-Riddle Aeronautical University  
Emory University  
Franklin and Marshall College  
Franklin W. Olin College of Engineering  
Georgetown University  
George Washington University  
Georgia Institute of Technology  
Grinnell College  
Harvard University  
Harvey Mudd College  
Indiana University  
Johns Hopkins University  
Lafayette College  
Lewis & Clark College  
Maryland Institute College of Art  
Massachusetts Institute of Technology  
Middlebury College  
New York University  
Northwestern University  
Oberlin College  
Parsons the New School for Design  
Pennsylvania State University  
Pomona College  
Princeton University  
Rice University  
Ringling College of Art & Design  
Rutgers, The State University of New Jersey  
Sarah Lawrence College  
School of the Art Institute of Chicago  
Skidmore College  
Stanford University  
Swarthmore College  
The Cooper Union  
Truman State University  
Tufts University  
University of California, Berkeley  
University of California, LA  
University of California, San Diego  
University of Chicago  
University of Georgia  
University of Illinois at Urbana-Champaign  
University of Maryland  
University of Miami  
University of Michigan, Ann Arbor  
University of Nevada, Las Vegas  
University of Pennsylvania  
University of Southern California  
University of Texas  
University of Virginia  
University of Washington  
University of Wisconsin-Madison  
Wabash College  
Washington University in St Louis  
Wellesley College  
Wesleyan University  
Williams College  
Yale University